

NEWSLETTER



MESA ACQUIRES ALCAD LEAD BATTERIES

Mesa Technical Associates, Inc. a provider of batteries, chargers and turn-key DC power solutions for telecommunications, utilities, and industrial markets, and Alcad, the world's leading supplier of advanced technology battery solutions for standby applications, have concluded an agreement for Mesa to acquire Alcad's leadacid battery business unit in North America.



Communicate to Remote Devices with the Simplicity of Cellular



The SEL-3061 cellular router can be used for a variety of infrastructure applications.

For electric utilities, the router provides connectivity to devices like recloser controls, motor-operated switches, capacitor banks, voltage regulators, substations, and much more. The combination of serial and Ethernet ports provides application flexibility, and using public networks with secure tunneling makes installation easy without sacrificing security.

Communications to substations: The SEL-3061 is certified to operate across a broad range of cellular network operators with LTE technology, which has a 100 Mbps downlink data rate.

Backhaul for SEL Fault and Load Transmitter and

Receiver Systems: Use the SEL-3061 to communicate with fault indicators and transmitters, including SEL-FLT Fault and Load Transmitters. The SEL-FLR Fault and Load Receiver collects fault and load data from SEL-FLT Transmitters, and then the SEL-3061 backhauls that information to a centralized location.

Distribution Network Automation: Provide communications for distribution automation with the SEL-3061. You can implement cost effective radio links for collecting SCADA, metering, and synchrophasor data from field devices and for engineering access to devices.



DOBLE ACQUIRES MANTA TEST SYSTEMS

Doble Engineering expands its protection testing capabilities by acquiring Manta Test Systems. The MTS-5100 is now part of the high quality line of test sets offered by Doble. The Manta MTS-5100 is capable of testing single overcurrent relays to multi-terminal end-to-end schemes, and includes all the power (VA) needed for old electromechanical relays in each output channel to minimize connection changes, with all of the output current and voltage channels necessary for modern microprocessor-based relays. Powerful productivity functions and built-in intelligence of the Manta make performing realistic power system simulations simple, increasing productivity and effectiveness, and test results can be saved directly from the front panel to simplify NERC/FERC reporting requirements.



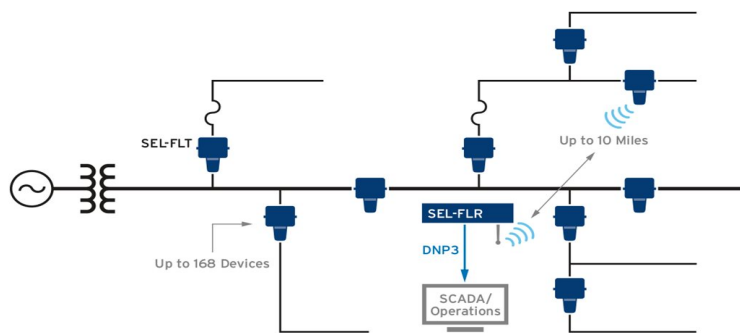
Know Where the Fault is Before Ever Rolling a Truck



Find Faults Faster by Communicating Them Over SCADA

The SEL-FLT and SEL-FLR Fault and Load Transmitter and Receiver System improves the overall reliability of your distribution system through accurate fault indication and load monitoring. The system enables you to locate faults faster and make informed switching decisions. Restoring power quickly is essential to ensuring satisfied customers and better CAIDI reliability metrics. Locating momentary faults allows you to address system issues and improve MAIFI metrics. Highly accurate (1% typical) load data also enables phase balancing and system planning.

Reduce Operation and Maintenance Costs: Line-powered SEL-FLT Transmitters remove the need for battery replacement programs, and auto-ranging eliminates manual configuration of trip thresholds. SEL-FLR Receivers can be tied into existing networks with no extra software to purchase. The wireless link range of 10 miles and the support for 168 SEL-FLT Transmitters per SEL-FLR decrease the required number of collection points and reduce costs.



Improve Fault Location Throughout the Distribution System: Adding the SEL-FLT and SEL-FLR System provides more detail for momentary and permanent fault location on feeders, taps, and laterals to provide a more granular and extended view of the distribution system. With centralized fault information from the SEL-FLT and SEL-FLR System, utility operations teams can dispatch crews to more precise locations, speeding up restoration. Bright LEDs on the SEL-FLT provide local identification for line crews confirming the fault indication reported through the SCADA system.

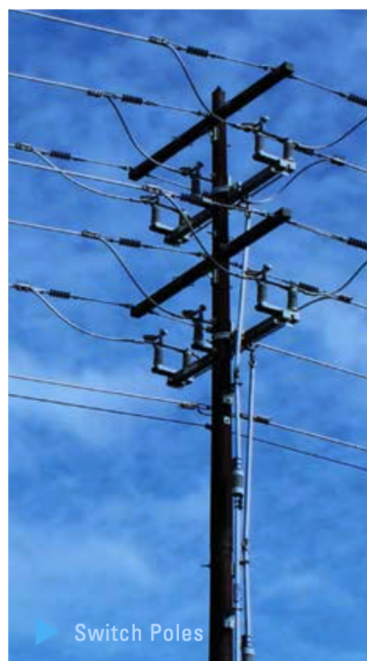


**McWANE
POLES**

**More than 20 APS
Customers now use
McWane Poles!!**

McWane ductile iron poles offer a revolutionary alternative to conventional utility poles.

Completely resistant to rot, woodpeckers and insects; they have a 75 to 100 year expected service life. McWane Poles are engineered for consistent strength making these poles ideal for heavy equipment (ie reclosers, switches, etc.) and areas that are not easily accessible. McWane Poles are made of over 90 percent recycled material and are 100 percent recyclable, and they do not leach harmful chemicals.



Determine System Phasing While Staying Touch Free



Atlantic Power Sales now represents EDM PhaseTrakker Products. PhaseTrakker Jr. Phase Identification. A lightweight, compact version of the original AP30 PhaseTrakker, the PhaseTrakker JR is the perfect Phase ID tool for basic

applications: OH, URD, Substations and Transformers from 120V to 500kV, in both direct and non-contact functionality. Compatible with all AP30 Reference units, the PhaseTrakker JR instantly displays Phase and Phase Angle with no historical data storage. A cinch to operate, its affordable price allows utilities to put one in every truck. Includes rugged carry case and portable pack, with both 120V AC and 12V auto chargers.

ATLANTIC POWER SALES NOW REPRESENTS TSi POWER



TSi Power is a manufacturer of industrial-grade power protection and backup products since 1998. Main products are harsh-environment / outdoor rated UPS (uninterruptible power supply) systems built in

NEMA 3R / 4 / 4X rated cabinets and customized UPS modules with 15 year service life lithium-ion batteries. Maximum AC or DC UPS output of 60~2250 watts and flexible battery backup time ranging from several minutes to 24+ hours can be provided.

UPCOMING EVENTS

1st Quarter 2019

TechAdvantage

March 10-12, 2019

Orlando, FL, USA

Conference

Tradeshow

APP 3530: SEL-3530 Real-Time Automation Controller (RTAC)

March 12-14, 2019

Charlotte, North Carolina, USA

<https://selinc.com/selu/courses/app/3530/>

APP 651R: SEL-651R Advanced Recloser Control

April 10-11, 2019

Charlotte, North Carolina, USA

<https://selinc.com/selu/courses/app/651R/>

North Carolina Electric Meter School

June 23-27, 2019

Myrtle Beach, SC, USA

Conference

Tradeshow



Atlantic Power Sales, LLC

718 Westland Farm Rd.

Mt. Holly, NC 28120

Phone: (704) 812-8694

Fax: (704) 754-4146

Email: sales@atlanticpowersales.com

www.atlanticpowersales.com